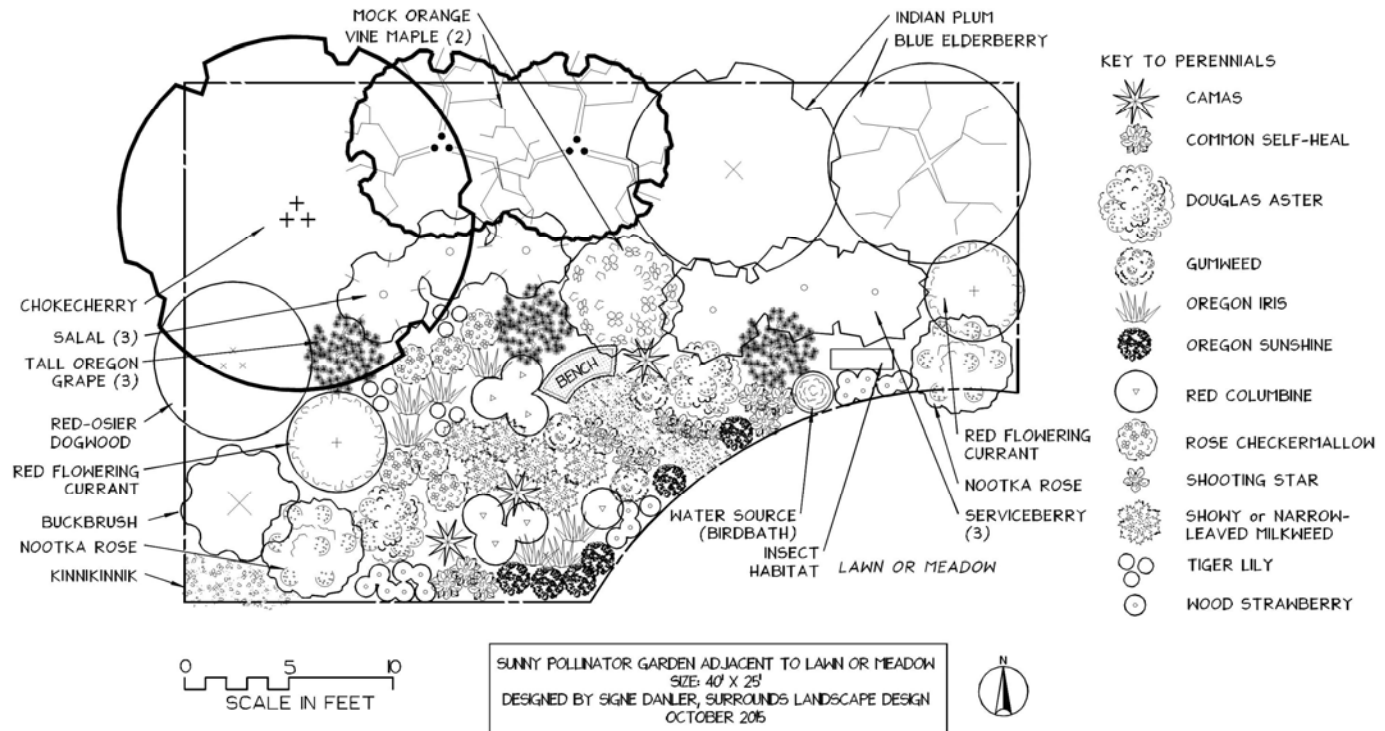


A Bird-Friendly Garden Plan



About the Garden

Designed for a typical suburban backyard, this 25 by 40 foot garden features showy native Willamette Valley plants. It should have a sunny southern exposure. Spread out the design and plant larger groupings to fill a bigger space.

Inclusion of trees, shrubs, and perennials provides a variety of heights. Low-growing self-heal, wood strawberry, and kinnikinnik along the edge soften the transition to an adjacent lawn.

Earliest spring blooms are provided by kinnikinnik, camas, shooting star, Oregon grape, Indian plum, and red-flowering currant, continuing with tiger lilies, milkweed, Douglas aster, and gumweed in the late summer and fall.

A short path leads to a bench beside the mock orange, so you can enjoy the fragrance while immersing yourself in the buzz of busy pollinators.

Basic Pollinator Needs

- Food** - fruits, nuts, seeds, nectar, and a wide range of invertebrates
- Water** - birdbath, small pond
- Shelter** - leaves, bark, thickets
- Nest sites** - leaves, moss, lichens, twigs, mud, straw, plant down and pine needles are commonly used.

The Birds

Finches - American goldfinches like thickets of Red-osier Dogwood for nesting, and eat seeds of Aster and Maple.

Woodpeckers - The Northern Flicker eats mostly insects in spring and summer, but eats berries like those produced by Red-osier Dogwood in winter.

Warblers - These small songbirds like layers (trees-shrubs-flowers), are often seen near maple and oak trees, and are attracted to the sound of moving water.

Hummingbirds - Rufous and Anna's are the most common in our area, and prefer the tubular flowers of red flowering currant, red columbine, and Oregon grape.

Sparrows - The Dark Eyed Junco likes a shrubby environment, brush piles, and birdbaths. They eat a range of seeds.

Shopping List

Broadleaf Trees

- Choke Cherry x1
- Vine Maple x2

Large Shrubs

- Blue Elderberry x1
- Buckbrush x1
- Indian Plum x1
- Mock Orange x1
- Red-osier Dogwood x1
- Serviceberry, Pacific x3

Small Shrubs

- Nootka Rose x2
- Red Flowering Currant x2
- Tall Oregon Grape x3

Groundcovers

- Kinnikinnik x3
- Salal x3
- Wood Strawberry x17

Flowers

- Broad-leaved Shooting Star x8
- Common Camas x3
- Common Self-heal x6
- Douglas Aster x3
- Oregon Iris x4
- Oregon Sunshine x6
- Red Columbine x7
- Rose Checkermallow x6
- Showy Milkweed x3
- Narrow-leaved Milkweed x3
- Tiger Lily x9
- Willamette Valley Gumweed x3

A Bird-Friendly Garden Plan



Special Conditions	Special Uses
A Prefers full sun B Can tolerate sun or some shade; partial shade C Prefers shade	1 Attracts insects, bees and butterflies 2a Birds 2b Hummingbirds 3 Wildlife forage, cover and food 4 Bank stabilization 5 Ornamental

Suggested plants used in design may be swapped out for other native plants of similar size and function.

Name	Mature Height	Sun	Soil Conditions	Special Uses	Description
BROADLEAF TREES					
Choke Cherry <i>Prunus virginiana</i>	8 - 15'	A, B	Wet to dry	2a, 3	White flowers in late spring. Cherries much loved by wild animals & birds. CAUTION - extremely toxic leaves for grazing animals!
Vine Maple <i>Acer circinatum</i>	25'	A, B, C	Moist soil	1, 2a, 2b, 3, 5	Attractive fall color. Suitable for shade ornamental or forest understory plant.
LARGE SHRUBS					
Elderberry, Blue <i>Sambucus caerulea</i>	12'	A, B, C	Prefers well drained soils	1, 2a, 2b	Fast growing handsome shrub. Excellent food and cover species. White flower clusters, edible berries.
Indian Plum <i>Oemleria cerasiformis</i>	16'	A, B, C	Dry to moist soil	1, 2a, 2b	Early spring bloom (Feb/Mar). White flowers yield small purple plums. Highly sought by birds.
Mock Orange <i>Philadelphus lewisii</i>	12'	A, B	All but wet soil.	1, 2a, 2b	Clusters of aromatic white flowers at branch ends. Attracts bees and butterflies. Plant at low elevation.
Narrow-leaved Buckbrush <i>Ceanothus cuneatus</i>	3 - 11'	A	Poor, rocky, dry, well-drained soils	1, 2a, 2b, 3,	Evergreen N-fixing shrub with small spoon shaped leaves. Small white to purple fragrant flowers grow in dense round clusters.
Red-osier Dogwood <i>Cornus sericea</i>	20'	A, C	Moist soils along wetlands	1, 2a, 2b, 3, 4, 5	Attractive red stems with white flower clusters that produce white berries. Fast growing. Used in riparian reclamation.
Serviceberry, Pacific <i>Amelanchier alnifolia</i>	10 - 25'	A, B	Dry to moist soils	1, 2a, 3	Attractive foliage and white flowers. This is an important wildlife species. Attracts cedar waxwings.
SMALL SHRUBS					
Nootka Rose <i>Rosa nutkana</i>	5 - 7'	A	Adaptable to most soils	1, 3	A common roadside species in the valley. Nootka rose has attractive pink blossoms (2" across) in summer.
Red Flowering Currant <i>Ribes sanguineum</i>	4 - 8'	A, B	Best on well drained soils	1, 2a, 2b, 5	Beautiful ornamental shrub with flowers that may be white to deep red, blue berries. Attracts butterflies and hummingbirds.
Tall Oregon Grape <i>Mahonia aquifolium</i>	4 - 6'	A, B, C	Dry to fairly moist	1, 2a, 2b, 3, 5	Oregon's state flower. Holly-like leaves; dark blue edible berries.
GRASSES / GROUNDCOVERS					
Kinnikinnik <i>Arctostaphylos uva-ursi</i>	6 - 12"	A	Well drained	1, 5	Evergreen shrub with reddish bark and light green, hairy leaves. A wonderful landscape shrub for dry areas.
Salal <i>Gaultheria shallon</i>	2 - 3'	B	Dry to moist	1, 3, 5	Dense low groundcover for areas where tall shrubs and weeds not desired! Foliage used in floral arrangements. Edible berries.
Wood Strawberry <i>Fragaria vesca</i>	2 - 8"	B	Woodland groundcover	3, 5	Deciduous groundcover. White to pink flowers in spring and early summer. Edible fruit.
FLOWERS					
Broad leaved Shooting Star <i>Dodecatheon hendersonii</i>	5 - 16"	A, B	Well drained (dry summer)	1, 5	Showy flower with color range in color from magenta to deep lavender to white. Bloom Feb – May.
Common Camas <i>Camassia quamash</i>	12-35"	A, B	Moist; light to heavy soils	1, 5	Perennial that grows in terminal spikes of at least 5 showy blue flowers.
Common Selfheal <i>Prunella vulgaris</i>	4 - 20"	A, B	Moist to dry	1, 5	Erect stems with opposite leaves, purple flowers May to September attract pollinators.
Douglas Aster <i>Aster subspicatus</i>	2'	A	Moderate moisture	1, 5	Grows in meadows, forest clearings, salt and fresh water wetlands. Purple flower late summer.
Oregon Iris <i>Iris tenax</i>	1 - 2'	A	Dry meadows, pastures	5	Low growing with grass-like blades. Showy dark blue flower.
Oregon Sunshine <i>Eriophyllum lanatum</i>	10 - 24"	A	Dry	1, 5	Perennial with woolly gray foliage and yellow flowers. Dry open habitat. Host plant for Painted Lady Butterfly.
Red Columbine <i>Aquilegia formosa</i>	12 - 18"	A	Moist; streamsides	1, 2b, 5	Fern-like foliage, delicate red flowers.
Rose Checkermallow <i>Sidalcea virgata</i>	8 - 40"	A	Moist to dry	1, 5	Tall open wands of pink to magenta 5-petaled flowers bloom from late spring to mid-summer. Resemble delicate hollyhocks.
Showy Milkweed <i>Asclepias speciosa</i>	2 - 3'	A	Moderate moisture	1, 2b, 5	Beautiful scent, rosy-pink starburst flowers in spherical clusters in summer. Silvery foliage. Nectar source for monarch butterflies.
Narrow-leaved Milkweed <i>Asclepias fascicularis</i>	2 - 4'	A	Well-drained moist to dry	1	Beautifully intricate dusky-rose flowers in crown-like umbels. This is the larval host plant for monarch butterflies.
Tiger Lily <i>Lilium columbianum</i>	2 - 4'	A, B, C	Moist to well-drained soil	1, 5	Characteristic orange lily flowers with purple spots (May-Aug.). Grows in meadows, thickets, open forests, and clearings.
Will. Valley Gumweed <i>Grindelia integrifolia</i>	8 - 40"	A, B	Moist soil	1, 2a	Perennial herbaceous plant with yellow ray and disc flowers (from June - Nov.). Important late-season pollen source.