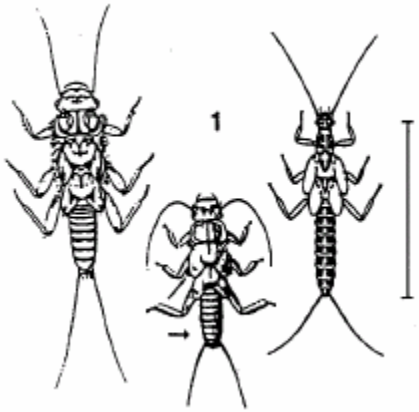


Stream Invertebrates

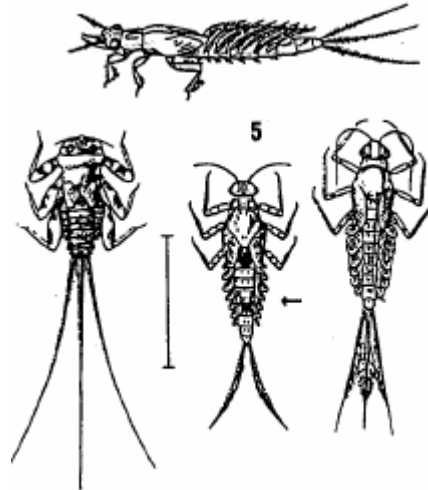
Group 1

Pollution sensitive organisms

Stonefly



Mayfly



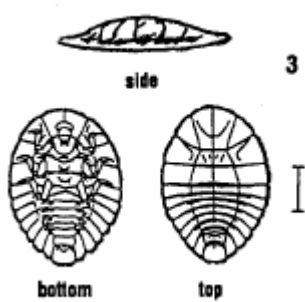
Caddisfly



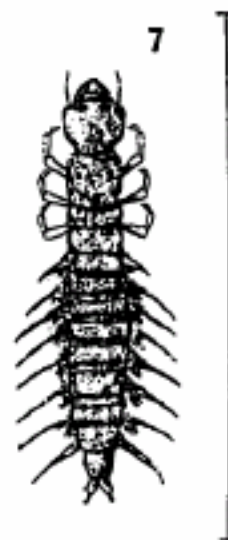
Gilled Snail



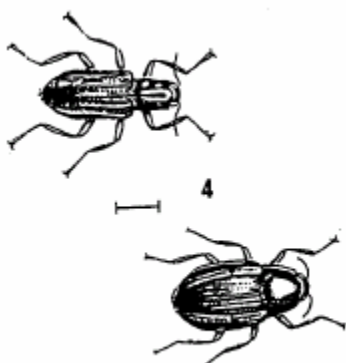
Water Penny



Dobsonfly (Hellgrammite)



Riffle Beetle

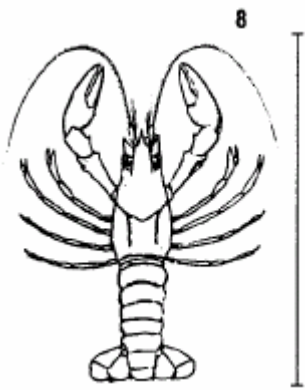


Stream Invertebrates

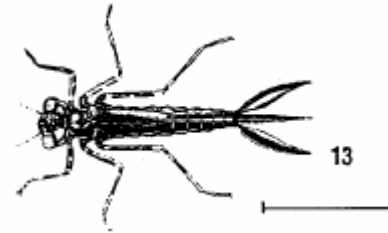
Group 2

Somewhat pollution tolerant organisms

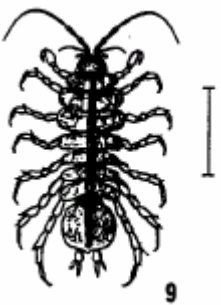
Crayfish



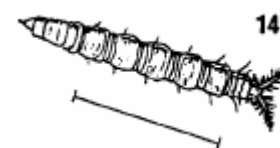
Damselfly



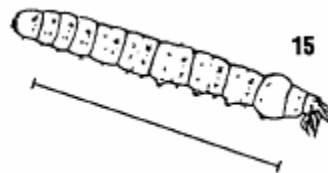
Sowbug



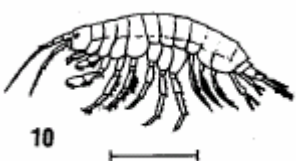
Watersnipe Fly Larva



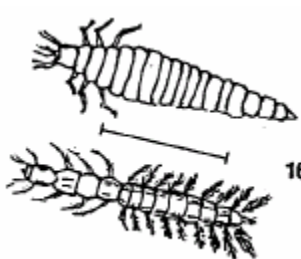
Crane Fly



Scud



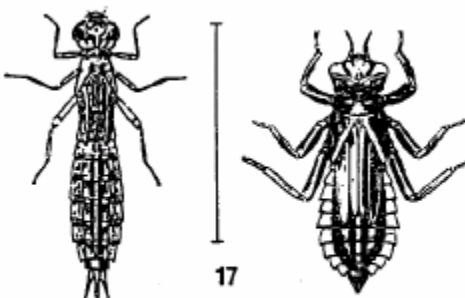
Beetle Larva



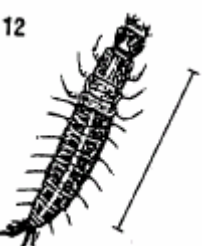
Alderfly Larva



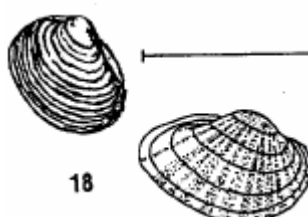
Dragonfly Larva



Fishfly Larva



Clam

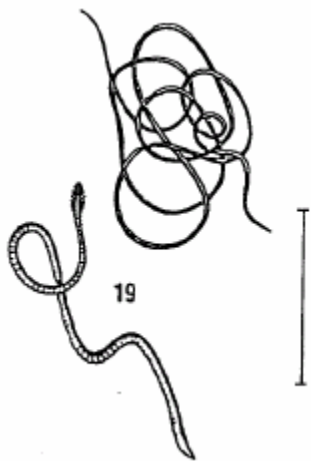


Stream Invertebrates

Group 3

Pollution tolerant organisms

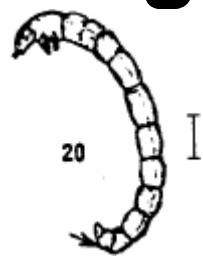
Aquatic Worm



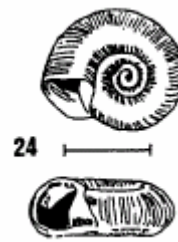
Pouch Snail and Pond Snails



Midge Fly Larva



Other Snails



Blackfly Larva



Leech

